

## Appearance structure

Purpose Description: smoke blowing net is mainly used to remove smoke, dust and odor produced during laser equipment processing. Improve the cleanliness of products, reduce the rate of product defects, and observe laser focus clearly.

Environmental assessment certification: our products are CE safety certification of EU, and purification effect is qualified by pony international specialty of the United States Test organization inspection and confirmation. The purified air can be discharged directly indoors or in the atmosphere.

Application fields: laser marking, laser beauty, laser laser, laser carving, laser peeling, laser cutting, laser Welding, laser cladding, etc



1. Upper cover observation window 3. Front cover door 5. Phalaenopsis buckle 7. Air outlet  
2. CNC panel 4. Caster 6. Three in one switch 8. Air inlet

## Specification parameters

	FL-500	FL-700
• model	FL-500	FL-700
• Filter layer(p)	6	7
• Weight(kg)	60	70
• Dimensions(mm)	550*440*885	550*440*1060
• Flow rate(m <sup>3</sup> /h)	700	750
• Noise(db)	<60	<63
• Power(w)	450	700
• Voltage(v)	220	220
• Negative pressure(Pa)	2500	3000

\*Content is subject to update without notice.

## Packing list

After opening the packing box and taking out the machine, please carefully check whether the following accessories are missing or damaged. If one item is missing or damaged, please contact the customer service center or dealer of Fumego device.

Main machine	1 set
Operation manual	1 (printed inside the instruction manual)
Warranty car	1 (printed inside the instruction manual)
Filters	1 set (installed in the machine)
Remote control	1 set (installed in the machine)

## Notice to users

Dear users

For your safety, health and rights, please pay attention to the following matters:

Safety summary of pre use inspection	security profile ⚠ ⚠
1. Is the appearance of the machine damaged 2. Is the power switch off 3. Whether the filter element inside the machine is placed smoothly 4. Whether the body door cover and box are installed firmly	1. This product is forbidden to be used at high temperature (ambient temperature over 60 °C), explosive, liquid and oil contaminated places. 2. The power cable must be grounded when using. 3. The internal voltage of the product is as high as 310V, which is forbidden to be opened by non-professionals. Check and repair the back plate. 4. When the product is working, do not take or place the filter element.

## Warranty card of Fumego device

Commodity information	commodity name	factory number
	model	Production date of commodity
Customer information	Name of the company	
	Address	
	contacts	
	contact number	
Maintenance record	fault condition	maintenance results
Date	customer signature	repairman signature

V20.10



**Fumego**

Shenzhen Fumego Purification Technology CO.,LTD  
Address: Laser Industry Park, Xinyu Road, Baoan District, Shenzhen, Guangdong, China.  
Tel: 0769-85356199 Web://www.qubocn.com

**Fumego**

**Instruction for Laser fume purifier**

SMOKE PURIFYING FILTER **FL-500** **FL-700**

## ⚠️ Precautions for using the machine

1.The power input of the machine should be used within the specified rated voltage range (marked by the power on the fuselage. It is strictly forbidden to use when the voltage is too high or too low.If you find that the voltage of the environment is unstable, please shut down the machine and Pull out the power plug of the equipment and use it after the voltage is stable.

2.When using the machine, the ambient temperature range of the gas and dust inhaled by the air inlet is: normal temperature - 50 ° C, Do not use above or below this temperature range.

3.When using the machine, the humidity of the gas and dust inhaled by the air inlet is 40% - 80%. If the humidity is too high, it will

The filter element will lose efficacy quickly and the internal circuit of the machine will be damaged. It is forbidden to use in the environment with humidity higher than 80%.

4.It is strictly forbidden to use the machine without filter element and directly inhale oil fume or dust

Particulate matter can cause damage to fans and control systems. Failure caused by using the machine under the above conditions shall be paid for Maintenance, will cause you greater losses.

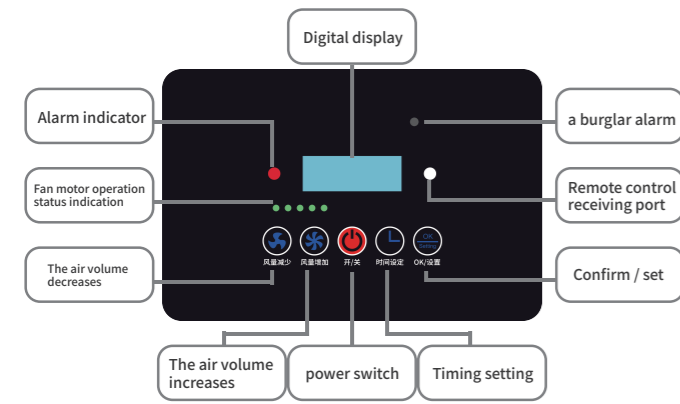
5.It is strictly forbidden to continue to use the machine after the filter element is seriously blocked, which will greatly shorten the service life of the machine, and even It will cause damage to the machine. The machine should be cleaned and maintained regularly and the filter element should be replaced regularly. To ensure that the machine is in good condition

Work under the state.

6.When the filter element of your machine is blocked and the suction force becomes smaller or the filter element fails to remove the odor, the Please replace the original filter element.

7.It is strictly forbidden to open the inside of the machine for maintenance without permission.The warranty sticker on the fuselage allows you to enjoy after-sales service Please do not tear or damage the warranty sticker of the fuselage.

## Operation instructions



Button icon description (panel and remote control applicable)

	<b>power switch</b>		<b>Timing setting</b>
	<b>The air volume increases</b>		<b>Air volume increase panel lock</b>
	<b>The air volume decreases</b>		<b>Confirm / set</b>

### Key to power on

Standby switch of the whole machine, press orange light to turn on, and the whole machine starts to run.When the machine is shut down, the whole machine stops running.

(Note: if it takes a long time to shut down, please turn off the main power switch of the machine and unplug the power cord)

### Air volume increase key

When the machine is running, the digital tube display will display the number in 10 increments when this key is pressed.Maximum 100, i.e. full speed operation of the machine.

### Air volume reduction key

When the machine is running, press this key to decrease the number of the digital tube display to 10, and the minimum is 10.

### off timer

When the machine is running, press this key to display hxxx on the digital tube display screen, and then press the wind speed increase / decrease adjustment to shut down the machine at a certain time, and set

Press the timing key again to adjust the shift of the times by pressing the time number, ten digits and hundreds of digits. After setting, press ok/ set key to confirm the timing device is over.XXX represents the number of hours the machine operates regularly, with a maximum of 300 hours and a minimum for 1 hour, press the timing key after setting, and the remaining time of timing can be queried. The display of digital tube will display hxxx for a long time, such as H005 means that the automatic shutdown will be performed after 5 hours. The time is set to h000, and the timing can be cancelled.

### Set key

When the machine enters the alarm state, after the buzzer rings, press this key once to release the buzzer sound.Press when no alarm is entered this key is to query the total running time of the whole machine.

### Panel lock key

Press this key while the machine is working, and all function keys on the operation panel of the machine will lock and not be operable.Press again This key can be removed after the power supply of the whole machine is disconnect and then turned on again.

Note: do not install the filter element or use it with inferior filter element in the market. In this case, the equipment is not covered by the warranty.  
Please replace the original factory configuration filter element regularly and fill it up in order to avoid more losses.

### The filter element is placed according to the standard configuration

▲Attention: it is strictly forbidden to place the position of the filter layer disorderly, which must be in accordance with the arrow indicates the direction to place! It is forbidden to touch the fan inlet inside by hand!

- |  |  |
|--|--|
| <b>XL-500</b>  | <b>XL-700</b>  |
| ▶ Fire net (first floor)   | ▶ Fire net (first floor)   |
| ▶ Primary cotton filter element (second layer)                   | ▶ Primary cotton filter element (second layer)                   |
| ▶ PP high efficiency filter element *2 (third and fourth layers) | ▶ PP high efficiency filter element *2 (third and fourth layers) |
| ▶ Activated carbon filter element *2 (fifth and sixth layer)     | ▶ Glass fiber high efficiency filter element (fifth layer)       |
|  | ▶ Activated carbon filter element *2 (sixth and seventh layers)  |

	Intercept and prevent sparks from entering the machine box however, explosion and other dangers.Open the upper cover and pass the fire filter element install, when the filter element is filled with dust, the suction force is obviously affected Clean it immediately Fire proof filter element can be repeatedly made use.
--	--

	The larger particles are intercepted by filtration indicator arrow for air inlet of filter element Head down, open the front door and load the primary effect cell when filtering The area of dust accumulated by cotton is over 70%, which can not be cleaned and dried Please replace the filter wool when cleaning.
--	--

	The filter intercepts 0.3 micron particles.Filter element air inlet finger arrow down, the primary cotton placed on the machine is too lower layer of filter element, when the filter element is filled with dust, it will have obvious influence the suction force should be cleaned immediately and cannot be cleaned up Please replace the filter element when cleaning.
--	---

	The filter intercepts 0.5 micron particles.Filter element air inlet finger arrow down, the primary cotton placed on the machine is too lower layer of filter element; when the filter element is filled with dust, it will have obvious influence the suction force should be cleaned immediately and cannot be cleaned up Please replace the filter element when cleaning.
--	---

	Absorb toxic and harmful gases and peculiar smell.Filter element air inlet finger arrow down, place the micro dust filter element of the machine Lower layer: when filter element is obviously unable to effectively remove smoke please replace the filter element when the odor contained in it.
--	--

### Operation method

- 1.Turn the butterfly button on the right side of the chassis anticlockwise to open the door
- 2.Start from the top layer. Pull the handle belt and pull out the filter element layer by layer
- 3.After the filter element of a certain layer is replaced, it is placed layer by layer from bottom to top according to the marked order.

Note: This product uses replaceable filter consumables. When the filter element is saturated, it needs to be replaced in time to ensure the purification effect of the machine!

## Trouble shooting



### ◆Please cut off the power supply before checking and repairing the equipment!

1. Phenomenon: the system still works, but the air volume is weak and the suction force is greatly reduced.

Cause: the air inlet is blocked or the filter element reaches saturation failure and forms blockage.

Check: turn off the power supply, open the top cover, check whether there are foreign matters blocking the air inlet; and then check whether the air outlet is blocked

Plug.If there is no abnormality after inspection and treatment, restart the machine. If the air volume is still small, the filter element should be replaced.

2. Phenomenon: the machine will automatically shut down after starting, turn on again and repeat the above phenomenon.

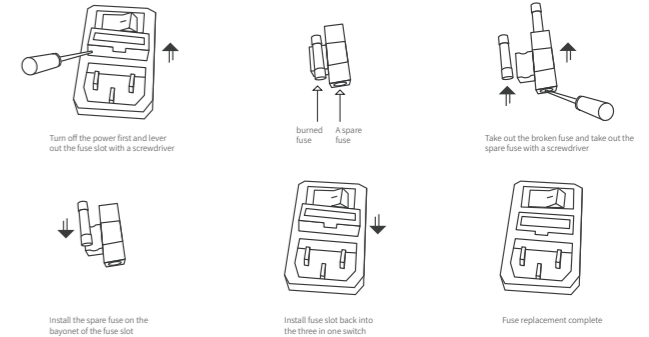
Cause: the internal air flow is blocked, and the resistance of filter element is too large, which leads to excessive starting current of fan and automatic protection shutdown.

Check: turn off the power supply, open the top cover, and check whether there are foreign matters blocking the air inlet; if there is no abnormality after inspection and treatment

Adjust the gear to the minimum, and then restart to adjust the gear to the appropriate air volume position.

## Fuse replacement

If the equipment beeps, first confirm whether the control valve is fully opened, and then confirm the indication of opening the three in one switch Whether the light is not on, if not, make sure there is no problem in the circuit, the fuse may be burnt out.



Please read this manual carefully before use and keep it properly for future reference.

## After sales service warranty clause

The warranty (free repair) of Fumego products within the warranty period shall be implemented from the date of purchase.

1.During the warranty period, the goods can only be repaired at Fumego's headquarters or dealers recognized by Fumego.

Show this warranty certificate and purchase invoice

2.Since the date of purchase, the main engine is guaranteed for three years. (Note: filter element and other accessories are consumables and are not covered by warranty(inside)

3.In any of the following circumstances, even within the warranty period, it can not be treated as warranty, but can be charged handle:

a. Damage caused by failure to use, maintain and keep in accordance with the operation instructions; B. losses caused by improper operation, abnormal voltage and falling;

c. D. It is impossible to prove that the machine is within the valid warranty period;

e. The information on the warranty certificate is inconsistent with the commodity identification or altered; F. damaged due to nuclear chemical or chemical corrosion; g. Damage caused by irresistible factors (lightning, earthquake, flood, fire and other natural disasters);

4.Fumego company reserves the right of final interpretation of the after-sales service terms.

\*The company will not be responsible for the loss caused by the above reasons. Not covered by warranty.